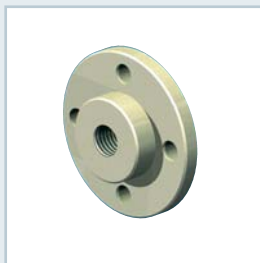


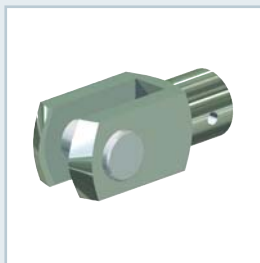
Pour version S à vis à avance axiale



Vis trapézoïdale
S-Tr
Page 82



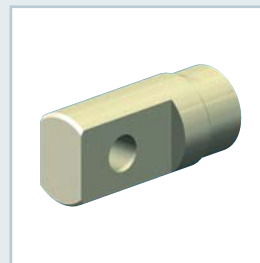
Plateau de fixation
BF
Page 82



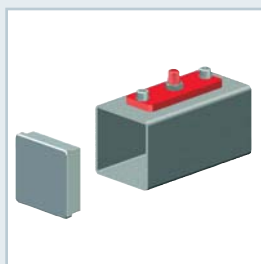
Chape
GK
Page 82



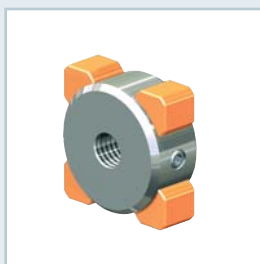
Tête sphérique
KGK
Page 82



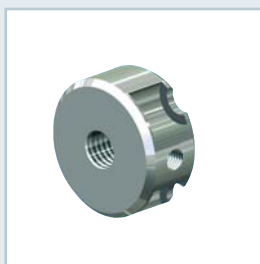
Tête pivotante
SLK
Page 83



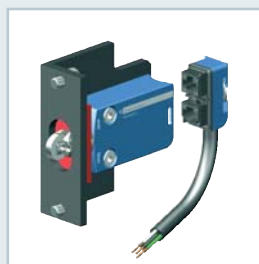
Tube de protection
SRO
Page 83



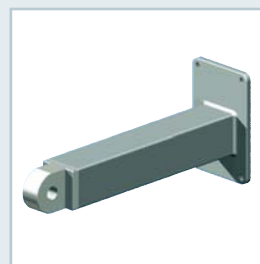
Système anti-rotation
VS
Page 83



Sécurité anti-sortie
AS
Page 83

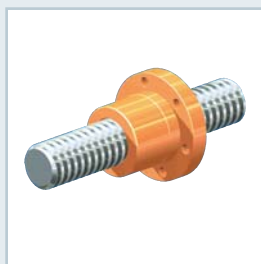
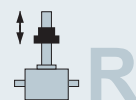


Jeu d'interrupteurs de
fin de course ES
Page 84

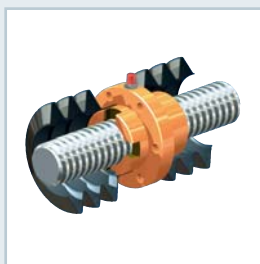


Tube pivotant
STRO
Page 86

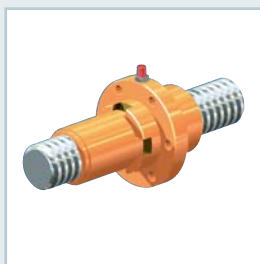
Pour version R à vis tournante



Écrou à bride
FM
Page 88



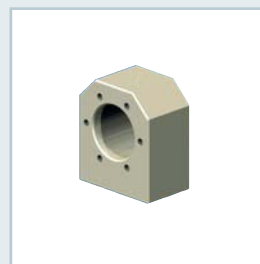
Écrou Duplex
DM
Page 89



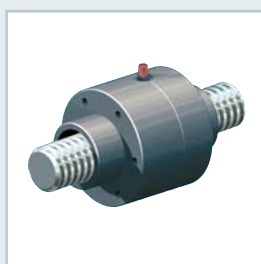
Écrou de sécurité
SIFA
Page 89



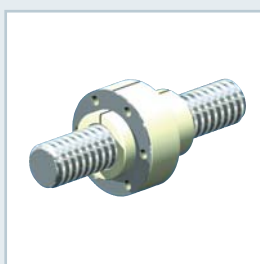
Adaptateur cardan
DMA pour DM
Page 89



Boîtier
TRMFL pour FM
Page 89



Écrou pendulaire
PM
Page 90



Écrou sans graisse
FFDM
Page 90



Vis trapézoïdale
R-Tr
Page 91

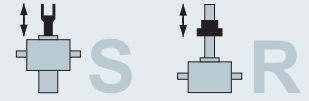


Palier à roulement
GLP
Page 91

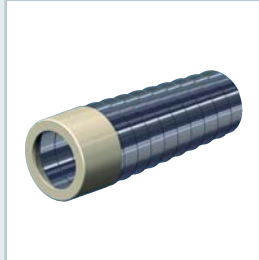
**REMARQUE :**

Les composants conviennent pour les vérins Z et GSZ. Voir aussi la vue d'ensemble aux pages 6 et 7.

Pour versions S et R



Soufflet
FB
Page 92



Ressort spiral
SF
Page 94



Support de palier
LB
Page 96



Support-cardan
KAR
Page 96



Volant
HR
Page 98



Capuchon de protection
SK
Page 98



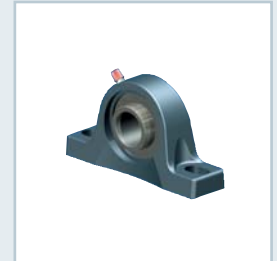
pour série GSZ
Pattes de fixation
BFL
Page 99



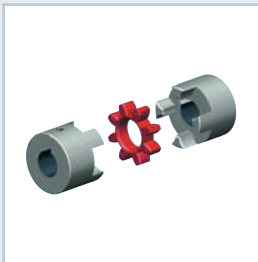
pour série GSZ
Support-cardan
KAR
Page 99



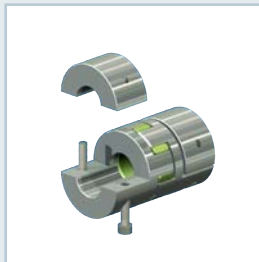
Arbre de transmission
VWZ
Page 100



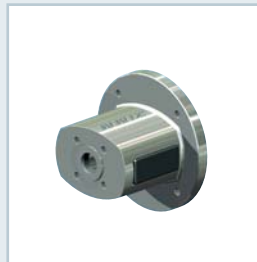
Paliers de maintien
STL
Page 103



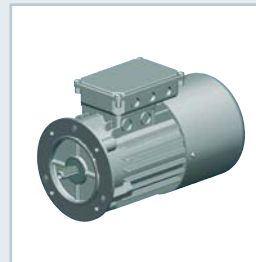
Accouplement standard
KUZ
Page 104



Accouplement à moyeux de serrage
KUZ-KK
Page 105



Lanterne moteur
MF
Page 106



Moteur triphasé
AC
Page 110



Moteur à courant continu
DC
Page 111



Codeur
DIG
Page 116



Frein à ressorts
FDB
Page 118



Graisses de lubrification
Page 120



Lubrificateur automatique
Z-LUB
Page 120

